



Multifit Bed Lever :MF 3/11S-CC

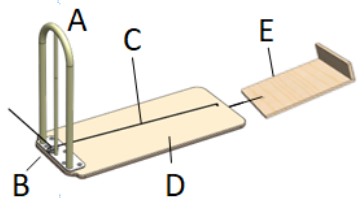
Read Instructions before use.

Manufacturer: Multifit Hospital Supplies Ltd, 8 Merritt Street, Whakatane. 3120.

Ph 0800 102 803, **Email:** Reception@multifit.co.nz. Web: www.multifit.co.nz.

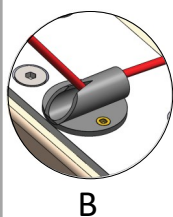
PARTS

IDENTIFICATION



- A - Handle /550mm high
- B - Wedge Cleat
- C - Cord
- D - Base Board/800Lx340Wmm
- E - Cleat Board
- F - Mattress
- G - Bed Base

INSTALLATION INSTRUCTIONS



The Bed Lever comes fully assembled.

1. Place the "Cleat Board" (E) on the opposite side of the bed, approximately 318mm from the headboard.
2. Pull the Cord (C) between the mattress and the Bed base.
3. Draw Cord (C) horizontally through the Wedge Cleat (B).

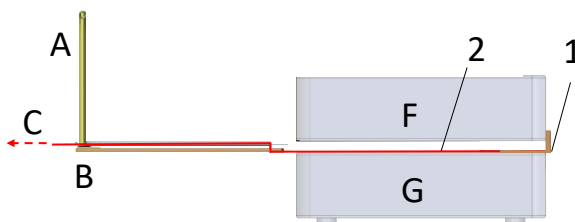


fig 1

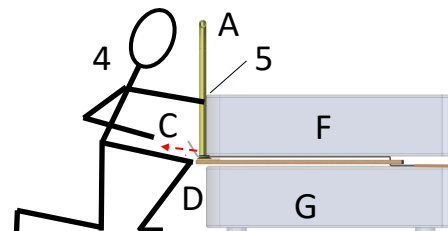


fig 2

4. **Fig 2.** Push the Handle (A) hard against the mattress. With your right knee against the base (D). Using maximum force pull Cord (C) Horizontally Until the Handle is **very hard** against the mattress. Pull the cord vertically so it is held by the Wedge Cleat (B). Place the remainder of the Cord under the mattress.

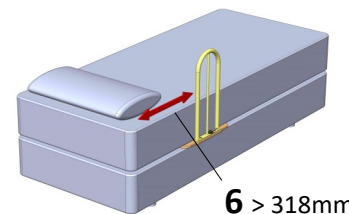


Fig 3

5. Confirm the handle is tight against the mattress and there is no gap.
 6. Confirm the gap between the Headboard of the bed and the Handle is **Greater than 318mm**.
- Note:** If adjustments are required, ensure Bed Lever is secured as above. Do **not** use if base shifts or handle is loose.

Only use on: Inner sprung and Memory Foam mattresses.

Bed Mattress : Suits all sizes. From single to Californian King. Not for use with Articulating beds

Maximum mattress thickness 450mm. See website for alternate handle heights to suit thicker mattresses.

Mattress firmness: Use only standard mattresses. Soft, compressible, air, or water mattresses can create unsafe gaps and increase entrapment risk."

OPERATING INSTRUCTIONS

Grab hold of the Handle to assist with sitting up and lying down in bed, and with getting in and out of bed. Ensure the person who will be making the bed knows the importance of refitting the Bed Lever correctly each time the bed is made. Stop using immediately if damaged or broken, or if parts are missing. Stop using immediately if product shifts out of its original position until it is readjusted into the correct position.

Retain these instructions in a safe place for further reference.

Report problems: In addition to contacting the manufacturer directly, consumers should report problems to the CPSC at its website SaferProducts.gov or call 1-800-638-2772, or to the FDA at 1-800-332-1088. In New Zealand report problems to www.medsafe.govt.nz.

For further information, see: cpsc.gov/en/Safety-Education/Neighborhood-Safety-Network/Posters/Adult-Bed-Rails/ and www.fda.gov/bedsafety.

MAXIMUM USER WEIGHT - 150kg (Choose the "Heavy Duty Bed Lever" for users heavier than this weight)

MAINTENANCE & CLEANING: The Bed Lever is best cleaned with a damp cloth using a non-abrasive cleaning fluid, and then dried to remove any trace of residue.

The Bed Lever should not be immersed in cleaning fluids, dip tanks etc.

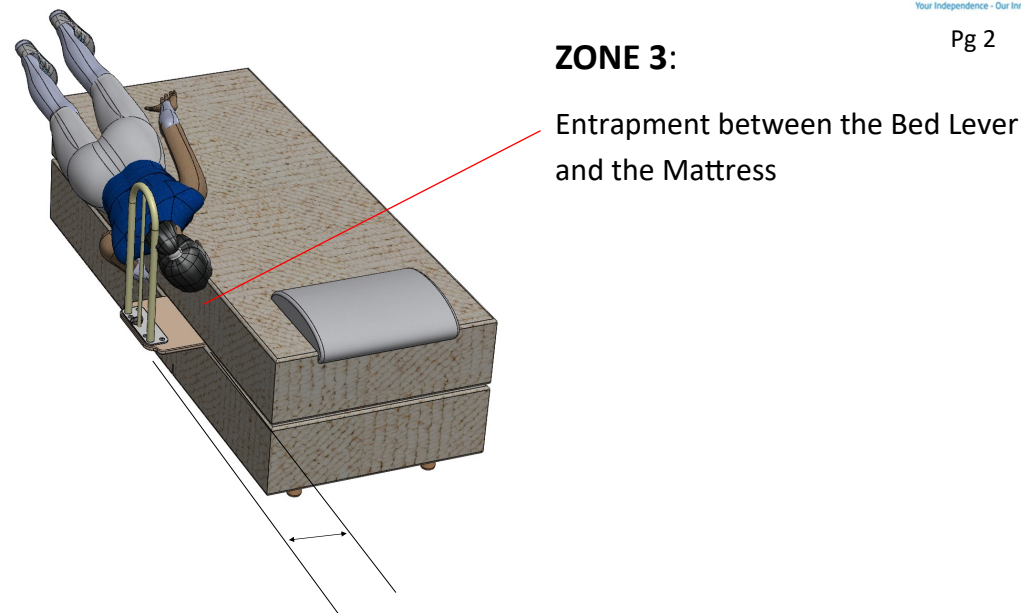
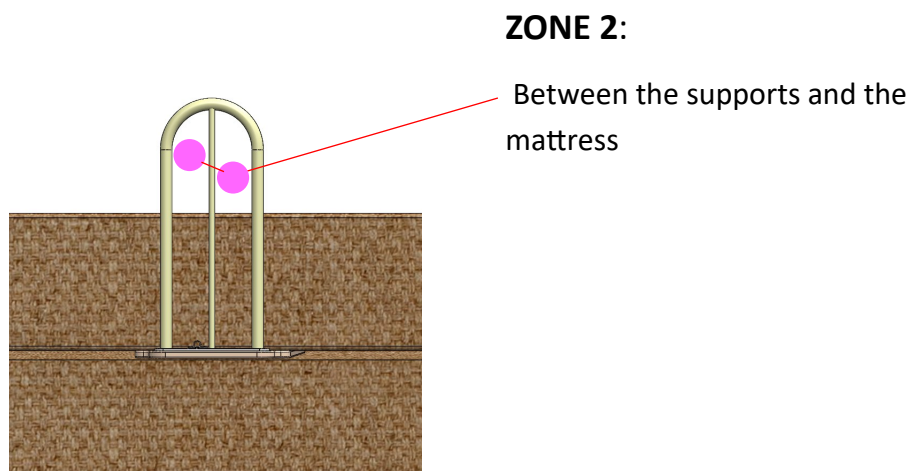
DISCLAIMER: Multifit Hospital Supplies Ltd cannot be liable for any harm or injury that may result or has resulted from the improper use, suitability of the Bed Lever for the user, incorrect installation, or neglect to follow through with ongoing safety assessments as the user's situation changes. Contact us on 0800 102 803 if you have any concerns.

WARRANTY Applies to the original purchaser to be free from defects for two years from the date of purchase.

MANUFACTURER : Multifit Hospital Supplies Ltd, 8 Merritt Street, Whakatane. 3120. Ph 0800 102 803, www.multifit.co.nz



Making entrapment zones safe.



⚠ **WARNING:**

ENTRAPMENT, STRANGULATION, SUFFOCATION AND FALL HAZARDS

Gaps in and around this product can entrap and kill. People with Alzheimer's disease or dementia, or those who are sedated, confused, or frail, and are at increased risk of entrapment and strangulation. People attempting to climb over this product are at increased risk of injury or death from falls. Always make sure this product is properly secured to bed.

If product can move away from bed or mattress, it can lead to entrapment and death.

⚠ **WARNING SUFFOCATION/STRANGULATION/ENTRAPMENT HAZARD.**

If product is installed incorrectly or moves from its initial position gaps can occur which can entrap and kill.

People with Alzheimer's disease, dementia or other neurological conditions, or those who are sedated, confused, or frail, are at increased risk of entrapment, suffocation and strangulation.

NEVER use unless product is tight against mattress, without gaps, and at least 12½ in.(318mm) from headboard and footboard.

NEVER use with children.

NEVER use on toddler, bunk, water, or inflatable beds, or on beds with mattress toppers or soft compressible pads.

⚠ **WARNING – ENTRAPMENT HAZARD.** **NEVER** use Bed lever without properly securing it to bed. Incorrect installation can allow product to move away from mattress, bed frame and/or head or foot boards, which can lead to entrapment and death.