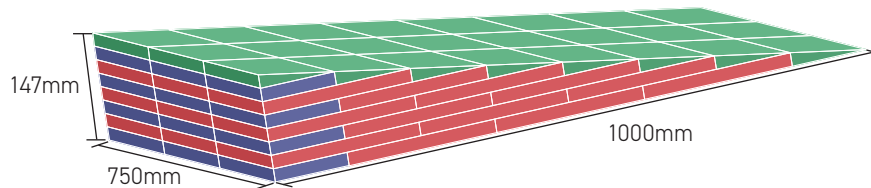
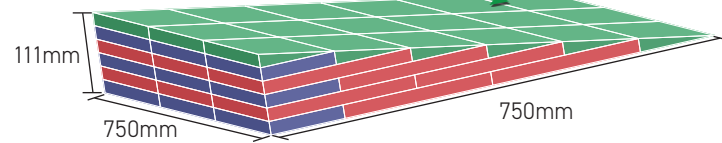
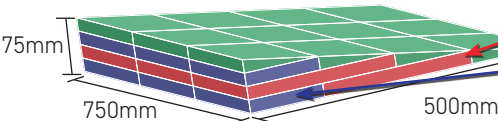
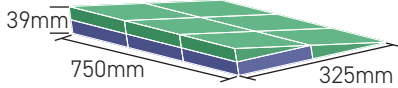


Excellent Ramp Systems

Dimensions and Details

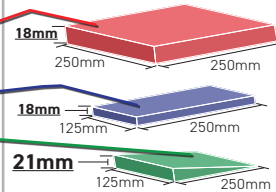


With Excellent System ramp modules, you can quickly, economically, and easily assemble the size and shape of ramp you require. No obstacle is insurmountable and the ramp modules can be taken apart and reassembled again and again to fit any situation. They can be cut to any shape with a hand saw and installed indoor or outdoors.



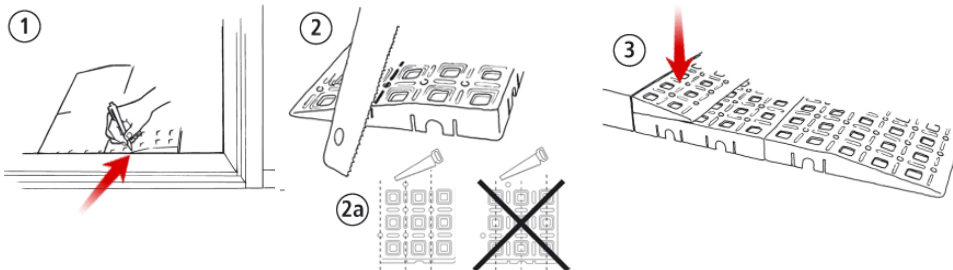
DIMENSIONS

Please note: THE WEDGE SECTIONS ARE 21 MM HIGH. THE SQUARE SECTIONS ARE 18 MM HIGH. The total height without spacers for Ramp Kit 1 is 18mm + 21mm = 39mm!



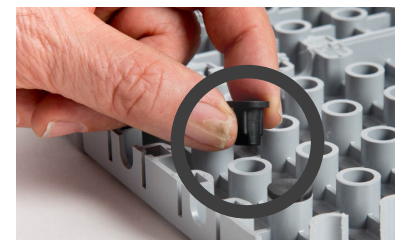
Further height adjustment

Spacer



Tested for safety

1:8 slope ratio



Stop your ramp from slipping on the floor.

- Remove the protective tab on the base of the locating pin.
- Insert pins into the holes on the bottom of the ramp.
- Place the ramp on the floor in the desired location and press down firmly.
- Pull the ramp up and make sure that the locating pins have stuck securely.

When building a ramp system, assemble each section together with ribbed pins.

Black rubber pegs can be used to reduce slipping when not using the adhesive-backed locating pins.